



# Demographic and Income Comparison Profile

Gwinnett Place Mall  
Rings: 3, 5, 10 mile radii

Latitude: 33.95707  
Longitude: -84.13328

	3 miles	5 miles	10 miles
<b>Census 2010 Summary</b>			
Population	82,926	219,867	756,573
Households	30,259	75,601	262,017
Families	19,754	52,801	190,744
Average Household Size	2.74	2.90	2.87
Owner Occupied Housing Units	12,894	41,023	170,579
Renter Occupied Housing Units	17,365	34,578	91,438
Median Age	30.9	31.7	34.4
<b>2014 Summary</b>			
Population	86,261	229,549	787,236
Households	31,122	78,054	270,937
Families	20,143	54,148	196,344
Average Household Size	2.77	2.94	2.89
Owner Occupied Housing Units	12,095	39,459	168,769
Renter Occupied Housing Units	19,028	38,595	102,167
Median Age	31.7	32.5	35.1
Median Household Income	\$46,227	\$51,415	\$63,686
Average Household Income	\$59,315	\$68,638	\$90,847
<b>2019 Summary</b>			
Population	93,124	248,532	847,730
Households	33,420	84,048	290,893
Families	21,486	58,001	210,080
Average Household Size	2.78	2.95	2.90
Owner Occupied Housing Units	12,878	42,300	180,967
Renter Occupied Housing Units	20,542	41,748	109,925
Median Age	32.1	33.0	35.6
Median Household Income	\$52,754	\$58,197	\$77,746
Average Household Income	\$68,233	\$79,129	\$106,923
<b>Trends: 2014-2019 Annual Rate</b>			
Population	1.54%	1.60%	1.49%
Households	1.43%	1.49%	1.43%
Families	1.30%	1.38%	1.36%
Owner Households	1.26%	1.40%	1.41%
Median Household Income	2.68%	2.51%	4.07%

Source: U.S. Census Bureau, Census 2010 Summary File 1. Esri forecasts for 2014 and 2019.



# Demographic and Income Comparison Profile

Gwinnett Place Mall  
Rings: 3, 5, 10 mile radii

Latitude: 33.95707  
Longitude: -84.13328

2014 Households by Income	3 miles		5 miles		10 miles	
	Number	Percent	Number	Percent	Number	Percent
<\$15,000	3,309	10.6%	7,420	9.5%	20,424	7.5%
\$15,000 - \$24,999	4,023	12.9%	8,801	11.3%	24,005	8.9%
\$25,000 - \$34,999	3,969	12.8%	9,062	11.6%	26,070	9.6%
\$35,000 - \$49,999	5,286	17.0%	12,305	15.8%	33,808	12.5%
\$50,000 - \$74,999	6,512	20.9%	16,557	21.2%	48,851	18.0%
\$75,000 - \$99,999	3,591	11.5%	8,654	11.1%	29,914	11.0%
\$100,000 - \$149,999	2,998	9.6%	8,860	11.4%	41,659	15.4%
\$150,000 - \$199,999	732	2.4%	3,425	4.4%	24,907	9.2%
\$200,000+	701	2.3%	2,970	3.8%	21,298	7.9%
Median Household Income	\$46,227		\$51,415		\$63,686	
Average Household Income	\$59,315		\$68,638		\$90,847	
Per Capita Income	\$21,174		\$23,301		\$31,364	

2019 Households by Income	3 miles		5 miles		10 miles	
	Number	Percent	Number	Percent	Number	Percent
<\$15,000	3,392	10.1%	7,401	8.8%	19,621	6.7%
\$15,000 - \$24,999	3,254	9.7%	6,990	8.3%	18,274	6.3%
\$25,000 - \$34,999	3,385	10.1%	7,641	9.1%	21,091	7.3%
\$35,000 - \$49,999	5,569	16.7%	12,702	15.1%	33,347	11.5%
\$50,000 - \$74,999	6,863	20.5%	17,146	20.4%	47,411	16.3%
\$75,000 - \$99,999	5,055	15.1%	12,206	14.5%	40,037	13.8%
\$100,000 - \$149,999	3,832	11.5%	11,204	13.3%	47,347	16.3%
\$150,000 - \$199,999	1,155	3.5%	4,781	5.7%	32,911	11.3%
\$200,000+	915	2.7%	3,977	4.7%	30,855	10.6%
Median Household Income	\$52,754		\$58,197		\$77,746	
Average Household Income	\$68,233		\$79,129		\$106,923	
Per Capita Income	\$24,211		\$26,712		\$36,786	

**Data Note:** Income is expressed in current dollars.

**Source:** U.S. Census Bureau, Census 2010 Summary File 1. Esri forecasts for 2014 and 2019.



# Demographic and Income Comparison Profile

Gwinnett Place Mall  
Rings: 3, 5, 10 mile radii

Latitude: 33.95707  
Longitude: -84.13328

	3 miles		5 miles		10 miles	
<b>2010 Population by Age</b>	<b>Number</b>	<b>Percent</b>	<b>Number</b>	<b>Percent</b>	<b>Number</b>	<b>Percent</b>
Age 0 - 4	7,498	9.0%	19,321	8.8%	56,957	7.5%
Age 5 - 9	6,506	7.8%	17,785	8.1%	60,218	8.0%
Age 10 - 14	5,768	7.0%	16,130	7.3%	60,024	7.9%
Age 15 - 19	5,349	6.5%	14,950	6.8%	53,918	7.1%
Age 20 - 24	6,532	7.9%	15,500	7.0%	45,590	6.0%
Age 25 - 34	16,514	19.9%	39,005	17.7%	108,671	14.4%
Age 35 - 44	13,552	16.3%	36,042	16.4%	123,017	16.3%
Age 45 - 54	10,585	12.8%	29,859	13.6%	118,124	15.6%
Age 55 - 64	6,437	7.8%	18,725	8.5%	75,157	9.9%
Age 65 - 74	2,622	3.2%	7,975	3.6%	33,305	4.4%
Age 75 - 84	1,154	1.4%	3,385	1.5%	16,101	2.1%
Age 85+	410	0.5%	1,189	0.5%	5,491	0.7%

	3 miles		5 miles		10 miles	
<b>2014 Population by Age</b>	<b>Number</b>	<b>Percent</b>	<b>Number</b>	<b>Percent</b>	<b>Number</b>	<b>Percent</b>
Age 0 - 4	7,349	8.5%	18,961	8.3%	55,530	7.1%
Age 5 - 9	6,882	8.0%	18,511	8.1%	58,936	7.5%
Age 10 - 14	6,193	7.2%	17,274	7.5%	61,772	7.8%
Age 15 - 19	5,600	6.5%	15,247	6.6%	55,071	7.0%
Age 20 - 24	6,876	8.0%	16,902	7.4%	52,549	6.7%
Age 25 - 34	15,456	17.9%	37,522	16.3%	109,104	13.9%
Age 35 - 44	14,110	16.4%	36,419	15.9%	117,230	14.9%
Age 45 - 54	10,983	12.7%	30,866	13.4%	119,815	15.2%
Age 55 - 64	7,600	8.8%	22,067	9.6%	88,761	11.3%
Age 65 - 74	3,466	4.0%	10,604	4.6%	44,503	5.7%
Age 75 - 84	1,319	1.5%	3,910	1.7%	17,705	2.2%
Age 85+	427	0.5%	1,265	0.6%	6,259	0.8%

	3 miles		5 miles		10 miles	
<b>2019 Population by Age</b>	<b>Number</b>	<b>Percent</b>	<b>Number</b>	<b>Percent</b>	<b>Number</b>	<b>Percent</b>
Age 0 - 4	7,904	8.5%	20,399	8.2%	59,984	7.1%
Age 5 - 9	7,112	7.6%	19,248	7.7%	61,372	7.2%
Age 10 - 14	6,803	7.3%	19,120	7.7%	65,221	7.7%
Age 15 - 19	6,223	6.7%	16,975	6.8%	58,630	6.9%
Age 20 - 24	7,087	7.6%	16,890	6.8%	52,121	6.1%
Age 25 - 34	15,889	17.1%	39,207	15.8%	119,669	14.1%
Age 35 - 44	14,440	15.5%	37,550	15.1%	120,958	14.3%
Age 45 - 54	11,789	12.7%	32,542	13.1%	119,671	14.1%
Age 55 - 64	8,824	9.5%	25,540	10.3%	102,154	12.1%
Age 65 - 74	4,827	5.2%	14,300	5.8%	58,436	6.9%
Age 75 - 84	1,711	1.8%	5,219	2.1%	22,181	2.6%
Age 85+	515	0.6%	1,541	0.6%	7,334	0.9%

Source: U.S. Census Bureau, Census 2010 Summary File 1. Esri forecasts for 2014 and 2019.



# Demographic and Income Comparison Profile

Gwinnett Place Mall  
Rings: 3, 5, 10 mile radii

Latitude: 33.95707  
Longitude: -84.13328

2010 Race and Ethnicity	3 miles		5 miles		10 miles	
	Number	Percent	Number	Percent	Number	Percent
White Alone	31,298	37.7%	91,522	41.6%	406,772	53.8%
Black Alone	22,178	26.7%	50,604	23.0%	148,368	19.6%
American Indian Alone	614	0.7%	1,518	0.7%	3,899	0.5%
Asian Alone	13,577	16.4%	36,506	16.6%	103,948	13.7%
Pacific Islander Alone	65	0.1%	152	0.1%	472	0.1%
Some Other Race Alone	12,137	14.6%	31,553	14.4%	69,396	9.2%
Two or More Races	3,057	3.7%	8,012	3.6%	23,716	3.1%
Hispanic Origin (Any Race)	26,926	32.5%	69,082	31.4%	158,581	21.0%

2014 Race and Ethnicity	3 miles		5 miles		10 miles	
	Number	Percent	Number	Percent	Number	Percent
White Alone	30,672	35.6%	90,229	39.3%	404,880	51.4%
Black Alone	23,745	27.5%	54,657	23.8%	160,539	20.4%
American Indian Alone	614	0.7%	1,517	0.7%	3,853	0.5%
Asian Alone	13,838	16.0%	37,954	16.5%	112,825	14.3%
Pacific Islander Alone	67	0.1%	162	0.1%	531	0.1%
Some Other Race Alone	13,973	16.2%	36,180	15.8%	78,107	9.9%
Two or More Races	3,352	3.9%	8,850	3.9%	26,501	3.4%
Hispanic Origin (Any Race)	30,725	35.6%	78,777	34.3%	178,746	22.7%

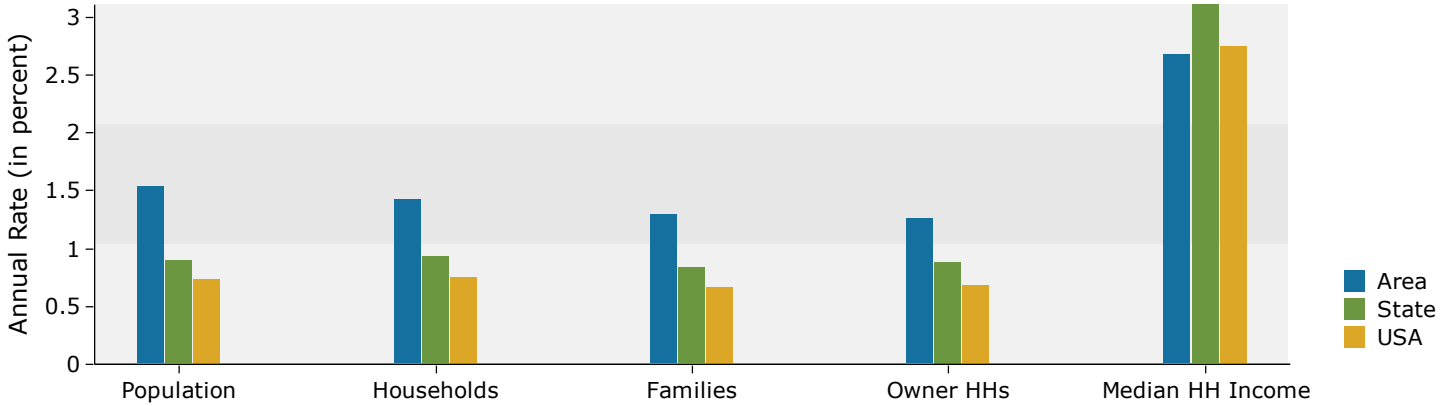
  

2019 Race and Ethnicity	3 miles		5 miles		10 miles	
	Number	Percent	Number	Percent	Number	Percent
White Alone	30,812	33.1%	90,710	36.5%	408,065	48.1%
Black Alone	26,899	28.9%	62,692	25.2%	184,272	21.7%
American Indian Alone	617	0.7%	1,521	0.6%	3,911	0.5%
Asian Alone	14,718	15.8%	41,414	16.7%	130,066	15.3%
Pacific Islander Alone	71	0.1%	177	0.1%	608	0.1%
Some Other Race Alone	16,178	17.4%	41,800	16.8%	89,717	10.6%
Two or More Races	3,829	4.1%	10,218	4.1%	31,092	3.7%
Hispanic Origin (Any Race)	35,986	38.6%	92,377	37.2%	209,356	24.7%

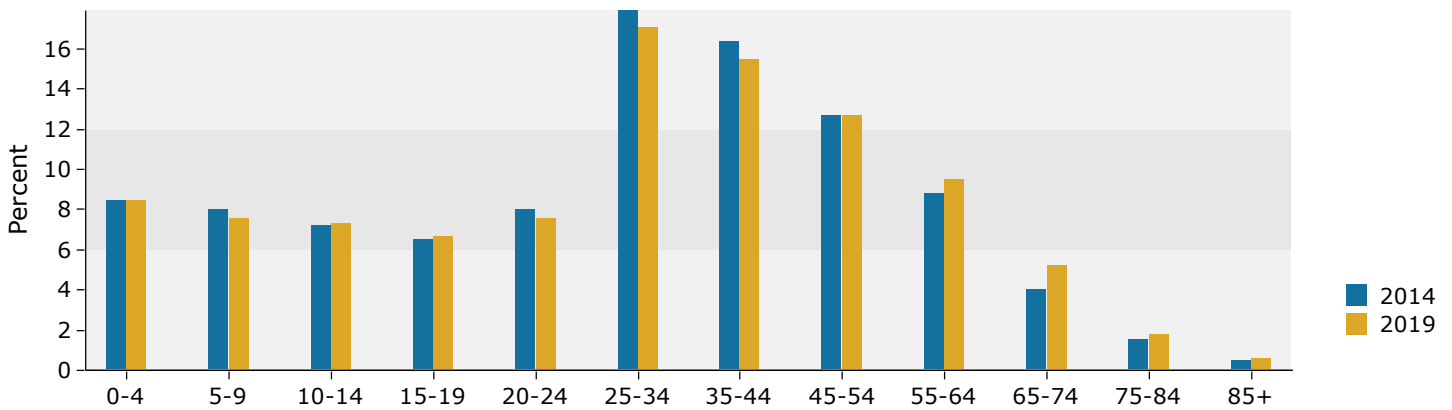
Source: U.S. Census Bureau, Census 2010 Summary File 1. Esri forecasts for 2014 and 2019.

## 3 miles

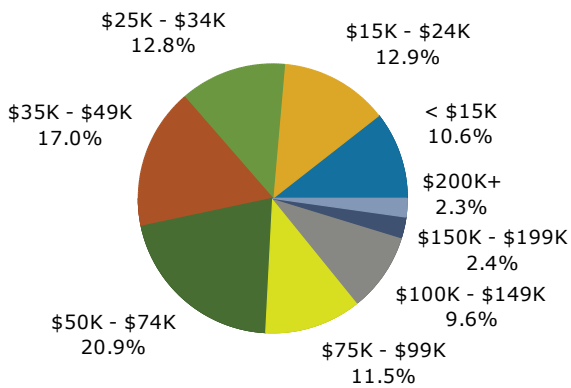
### Trends 2014-2019



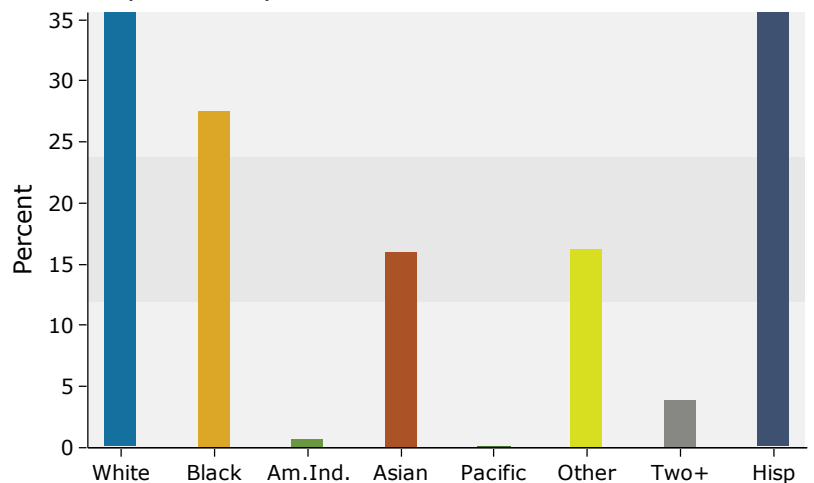
### Population by Age



### 2014 Household Income



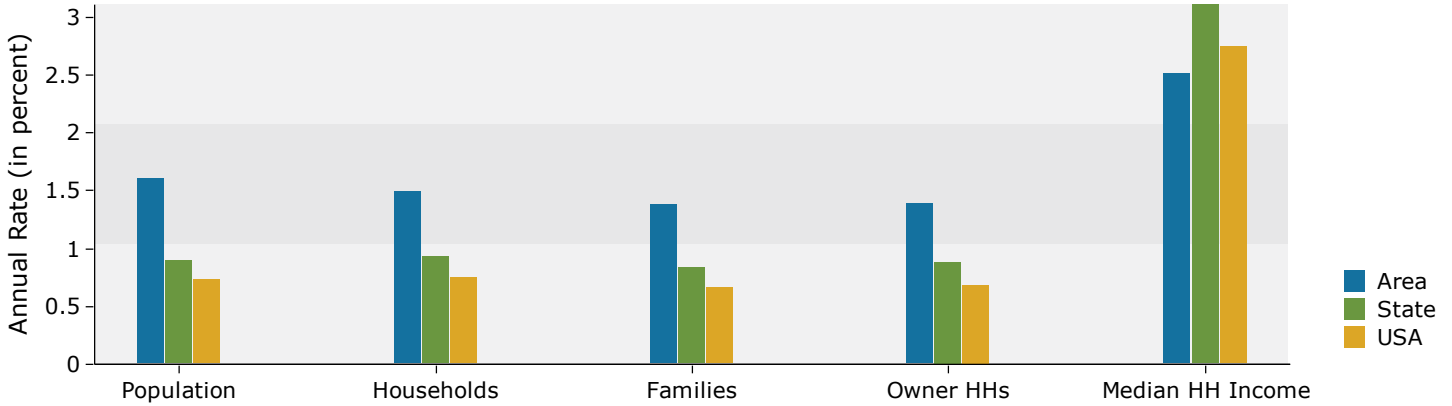
### 2014 Population by Race



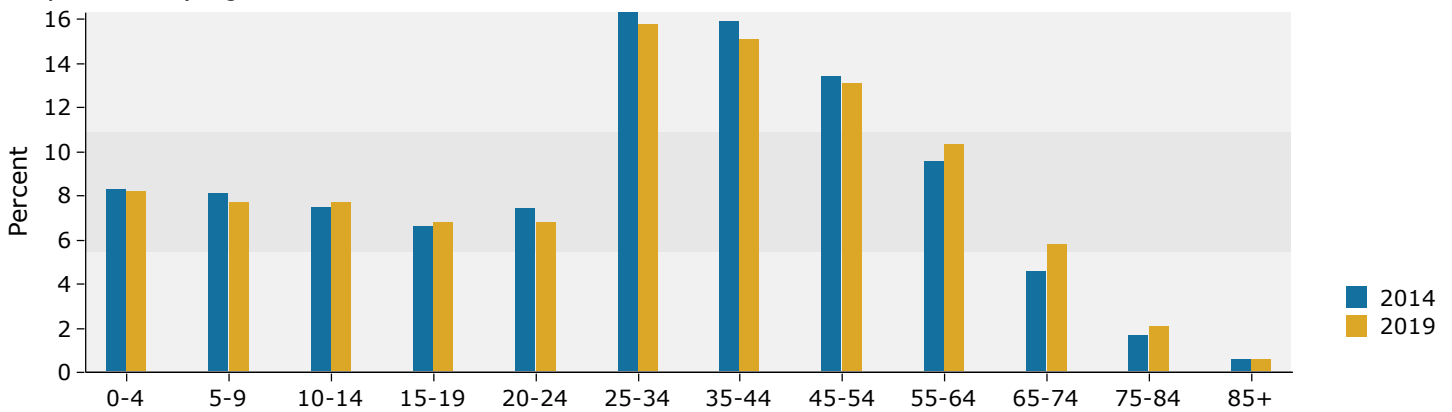
Source: U.S. Census Bureau, Census 2010 Summary File 1. Esri forecasts for 2014 and 2019.

## 5 miles

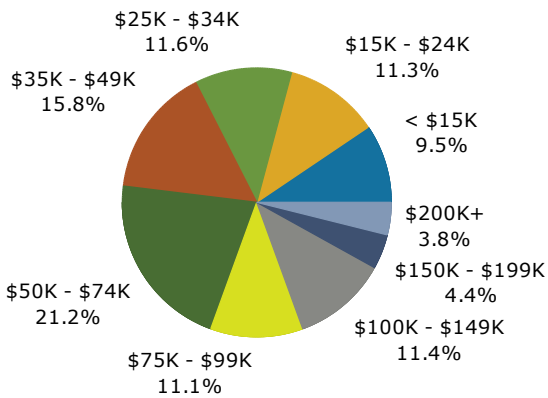
### Trends 2014-2019



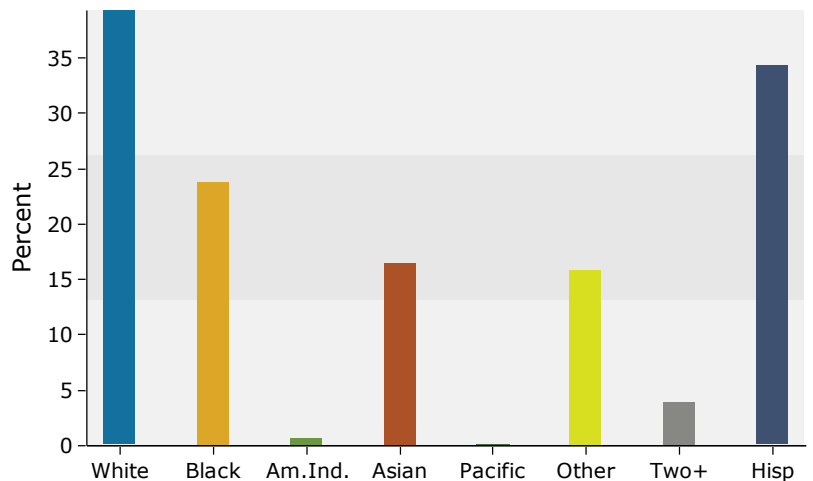
### Population by Age



### 2014 Household Income

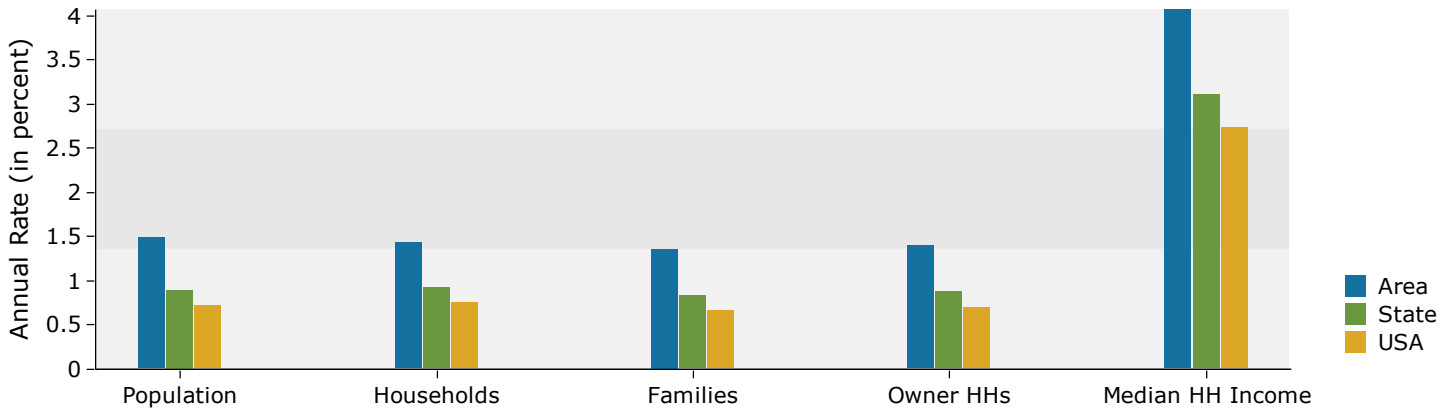


### 2014 Population by Race

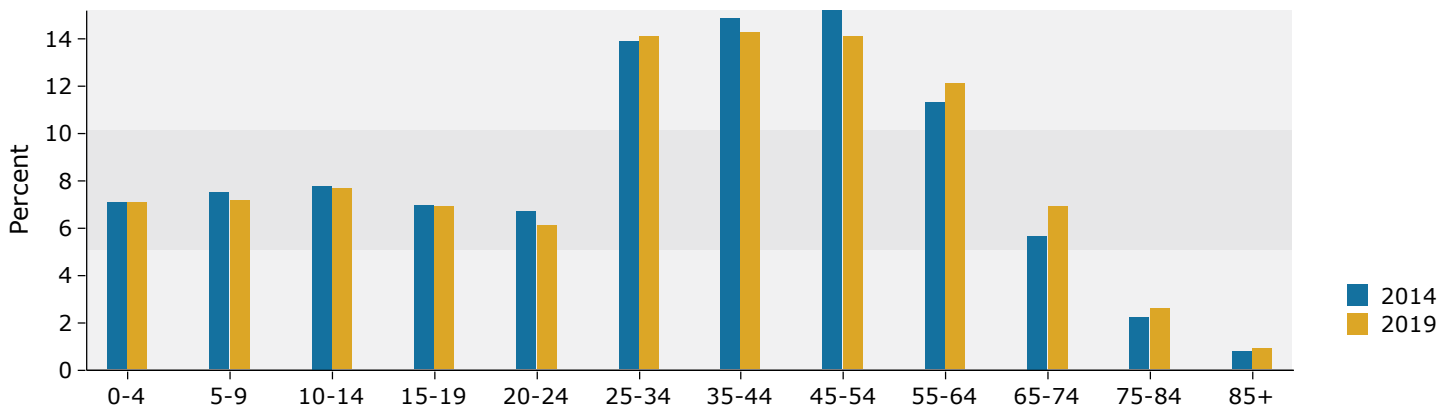


## 10 miles

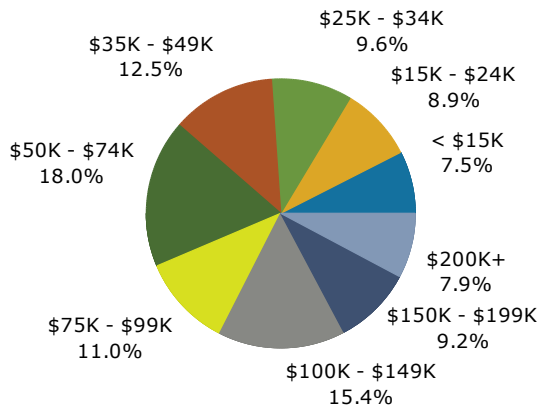
### Trends 2014-2019



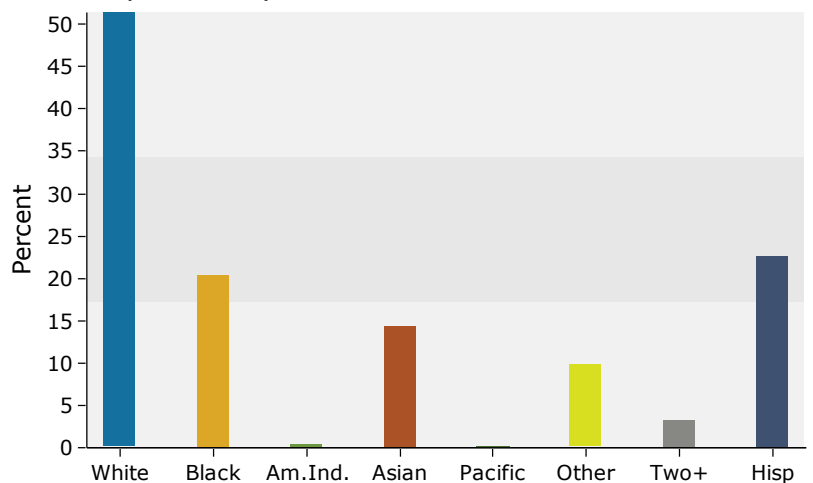
### Population by Age



### 2014 Household Income



### 2014 Population by Race



Source: U.S. Census Bureau, Census 2010 Summary File 1. Esri forecasts for 2014 and 2019.